



Parks

# Riverside Park's River Run Playground Reconstruction

Located In Riverside Park at W82nd Street and Riverside Drive

CB7 - Parks and Environment Committee

August 27, 2025

Abel Bainnson Butz, LLP

**Total Budget:** \$7.09m

Funded by Council Member Gale Brewer CD6

**Project Size:** 0.70 ac





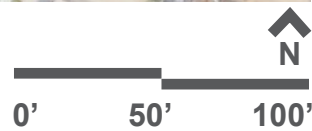
City NTS ↑ N



Neighborhood NTS ↑ N



Site



NYC Parks



ABEL BAINNSON BUTZ, LLP

## Riverside Park's River Run Playground | Project Location





# Land Use Categories

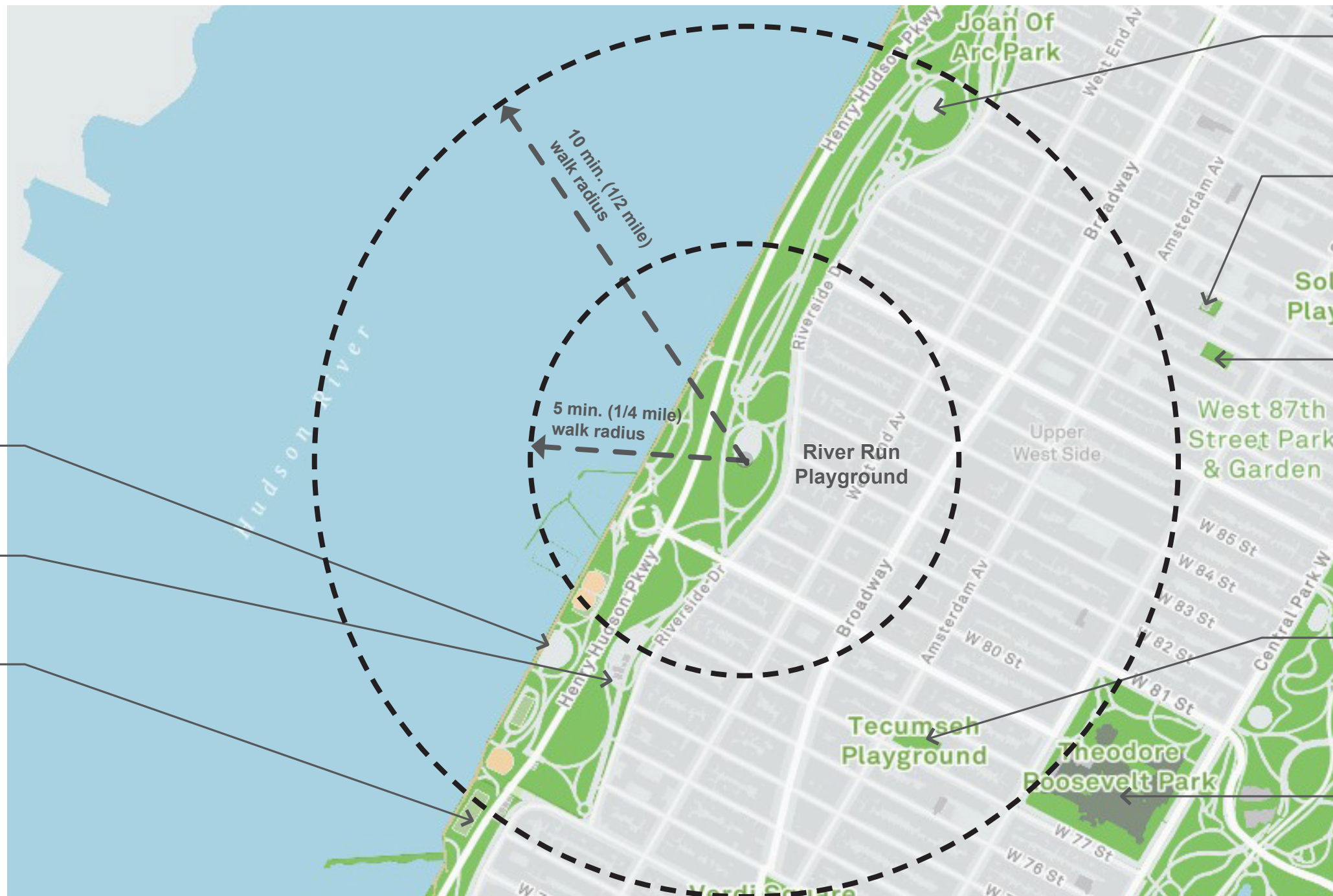
- 1 And 2 Family Residential
- Multi-Family Residential (Walkup)
- Multi-Family Residential (Elevator)
- Mixed Use
- Commercial & Office
- Industrial & Manufacturing
- Transportation / Utilities
- Public Facilities & Institutional
- Open Space And Outdoor Recreation
- Parking
- Vacant Land
- Other





Image exhibits the playground in relationship to the 1930s park expansion, circa 1945





- Riverside Park / Classic Playground**  
Public Restroom Building  
Play Equipment
- Riverside Park / Neufeld Playground**  
Public Restroom Building  
Basketball
- Riverside Park South**  
Public Restroom Building  
Basketball  
Soccer  
Baseball  
Dog Run  
Play Equipment  
Eatery

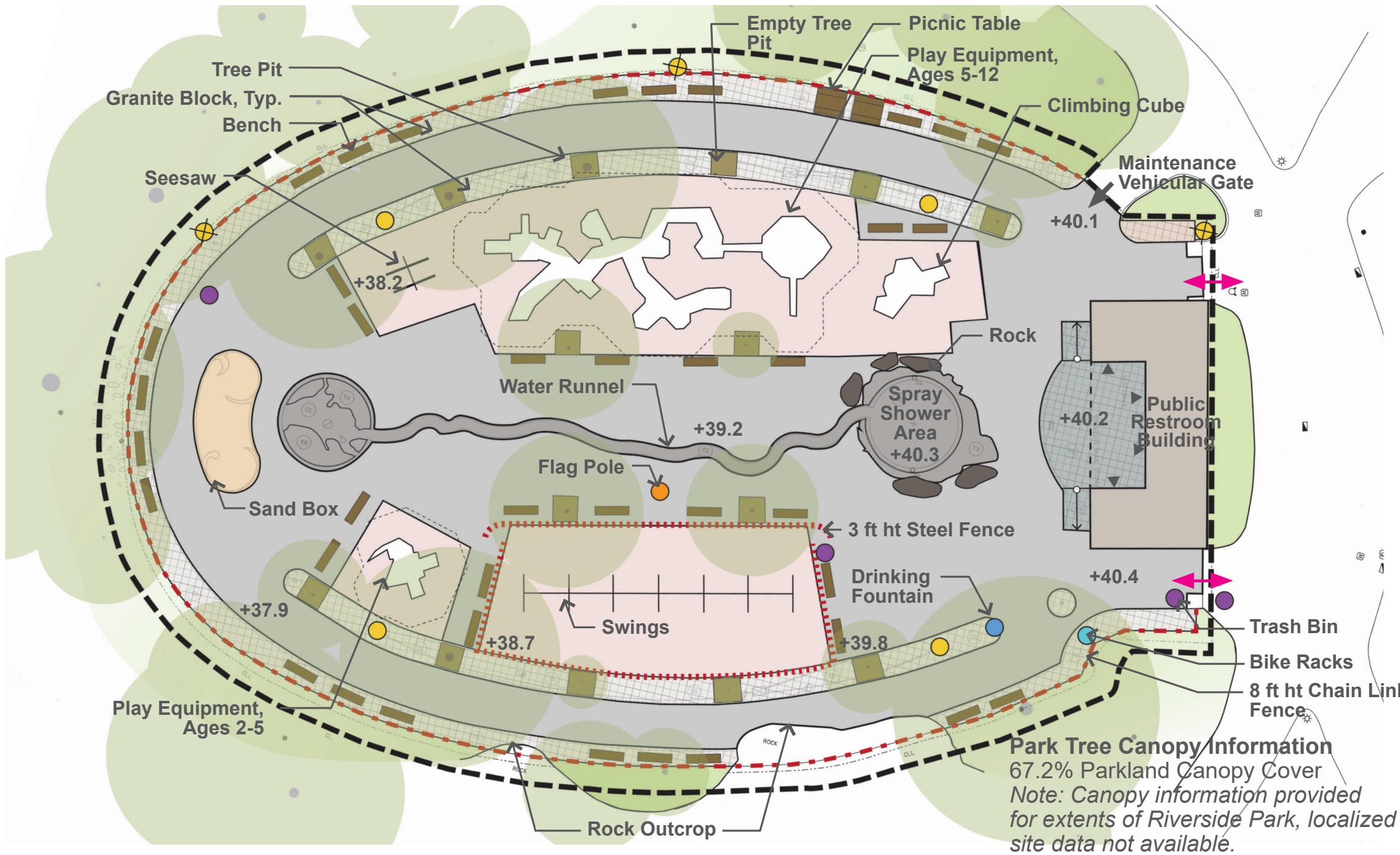
- Riverside Park / Hippo Playground**  
Public Restroom Building  
Play Equipment  
Spray Shower
- St. Gregory's Playground**  
Play Equipment
- West 87th Street Garden**  
Seating
- Tecumseh Playground**  
Public Restroom Building  
Basketball  
Play Equipment  
Spray Shower
- Theodore Roosevelt Park**  
Dog Run  
Sitting Areas  
Nobel Monument



## Riverside Park's River Run Playground | Neighborhood Parks Context







## Legend

- Project Limit
- Park Entrance
- Play Equipment on Safety Surface
- Building or Structure
- Building Entrance
- Asphalt Pavement
- Concrete Pavement
- Granite Block
- Bluestone Pavement
- Planted Area
- Tree
- Parks Light Pole (Type B Pole with Riverside Park Luminaire)
- Parks Light Pole (Octagonal Pole with Flood Lights)
- Drinking Fountain
- Trash Bin
- Bike Racks
- PRB Public Restroom Building (Non-Accessible & Not In Contract)

**Heat Vulnerability Index**  
Site is not in high HVI area.

**Rat Mitigation Zone**  
Site is not in rat mitigation zone.

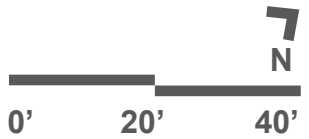


NYC Parks

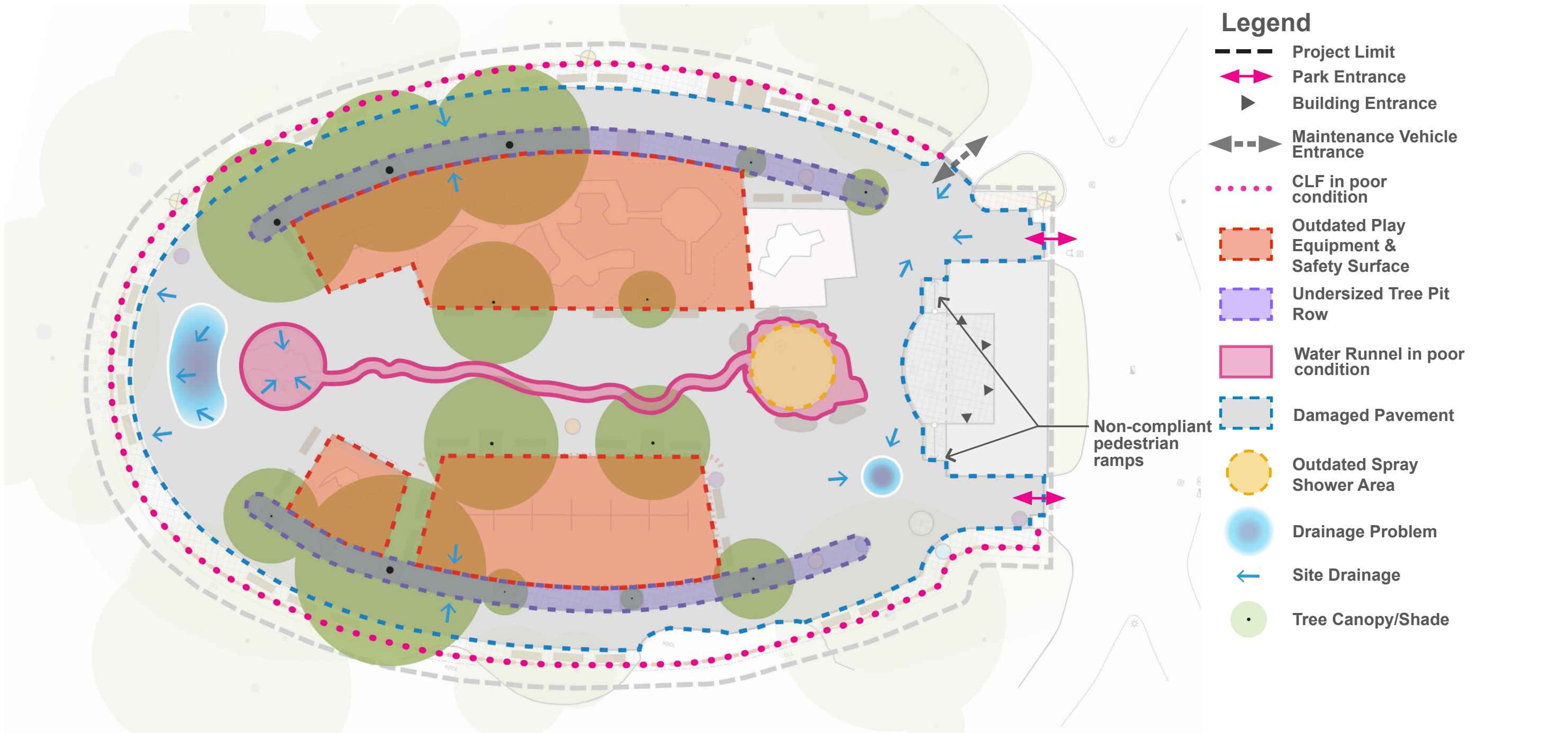


ABEL BAINNSON BUTZ, LLP

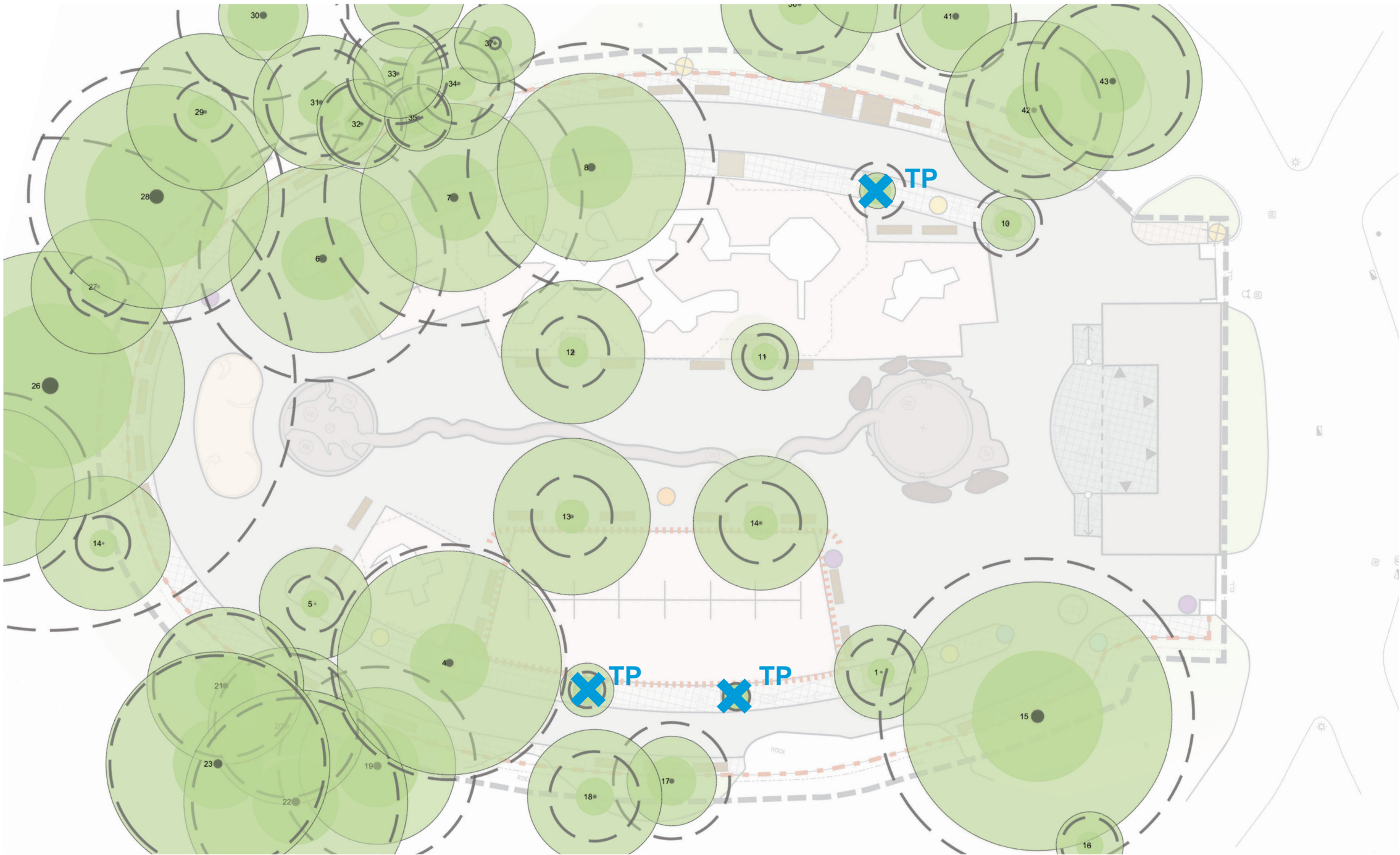
## Riverside Park's River Run Playground | Existing Conditions Diagram











# Legend

- Canopy
- Structural Root Zone
- Critical Root Zone
- X TP** Tree to be transplanted



## Riverside Park's River Run Playground | Tree Inventory







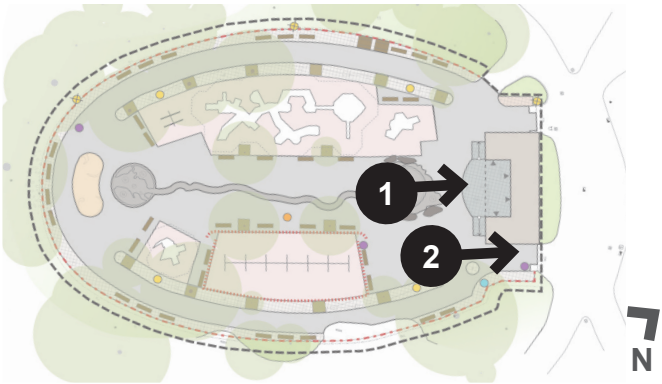
1 - South facade of public restroom building



2 - Steel double entry gate (east side)



Riverside Park’s River Run Playground | Existing Conditions Photos



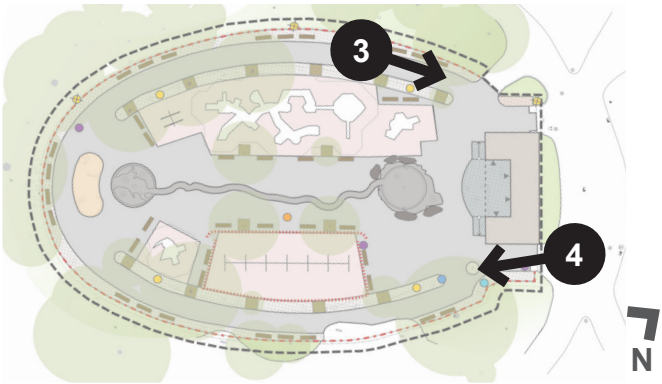




3 - Chainlink vehicular maintenance gate and western steel entry gate



4 - Eastern playground perimeter







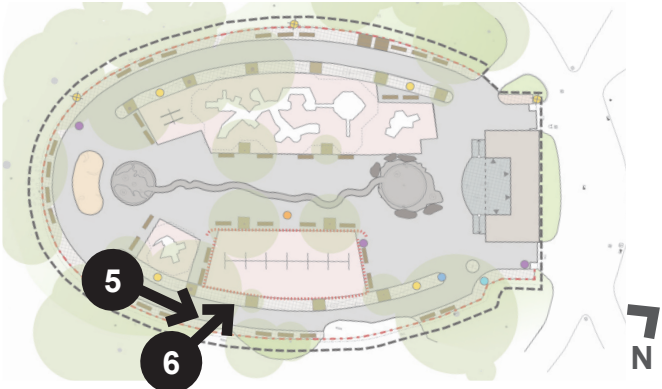
5 - Condition at northeastern perimeter



6 - Swings on east side of playground



Riverside Park's River Run Playground | Existing Conditions Photos



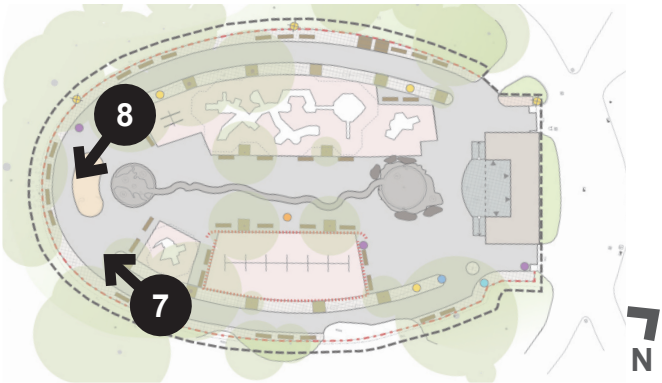




7 - Southern perimeter



8 - Sculptural sand box, created by local artist



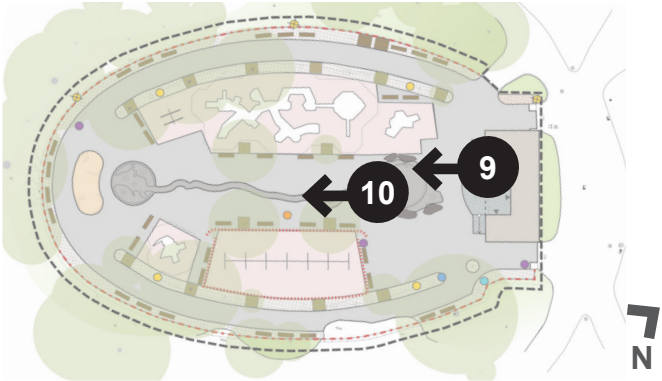




9 - Water play area features decorative pavement and rocks



10 - Water runnel is in poor condition



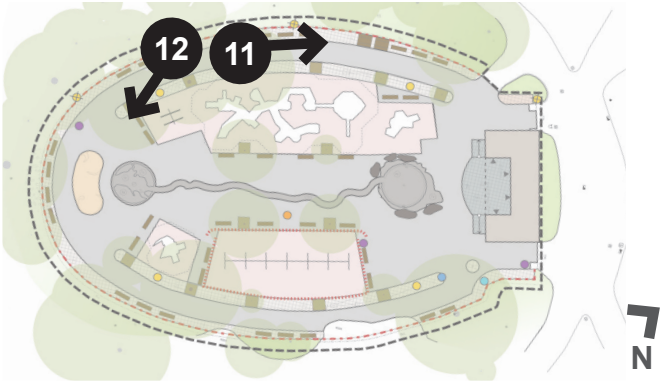




11 - Cracked & heaving asphalt pavement due to tree roots



12 - Mature trees are in undersized tree pits bordered with granite block



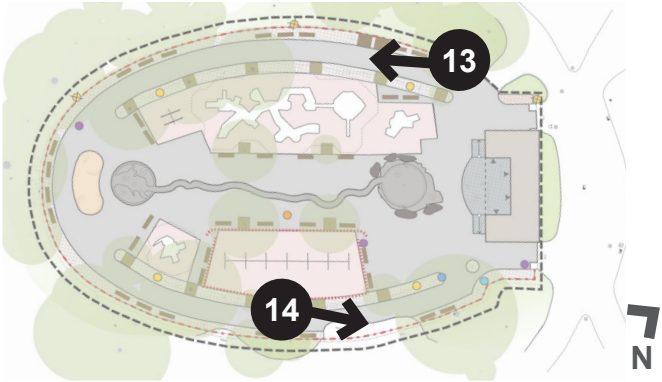




13 - Picnic tables and benches on northwestern perimeter



14 - Benches are outdated and positioned on a sloped area.



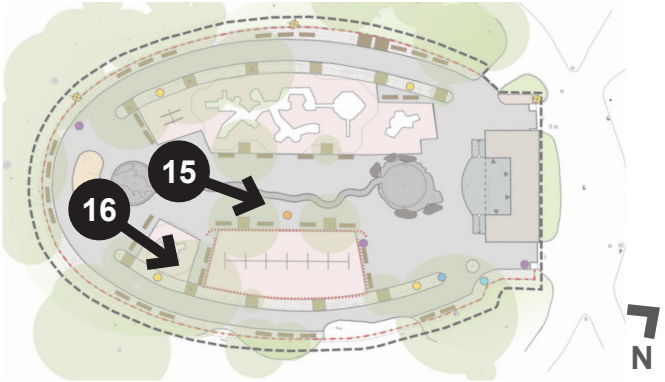




15 - Flag pole



16 - Small play structure (ages 2-5 yrs)



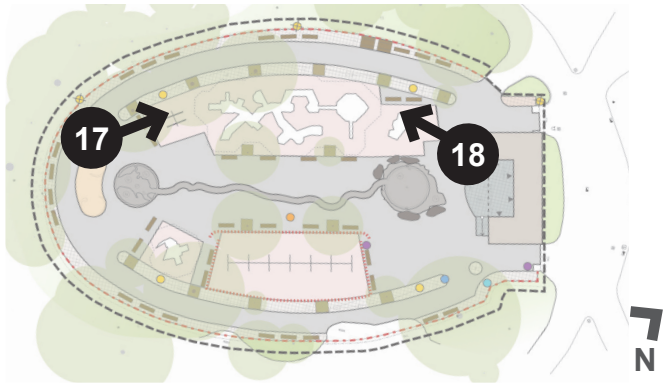




17 - Seesaw and large play structure (ages 5-12 yrs.) at background



18 - Climbing play cubes





# Community Priorities

## Green

preserve healthy trees, add planting

## Seating

benches, picnic tables, gathering spaces

## Play

ADA accessible, challenging play equipment, safer climbing options, slides

## Water

improve water play features, improve site drainage

## Site Safety

lighting, improve chain link fence

## Sustainability

green, manage stormwater, signage explaining trash protocol

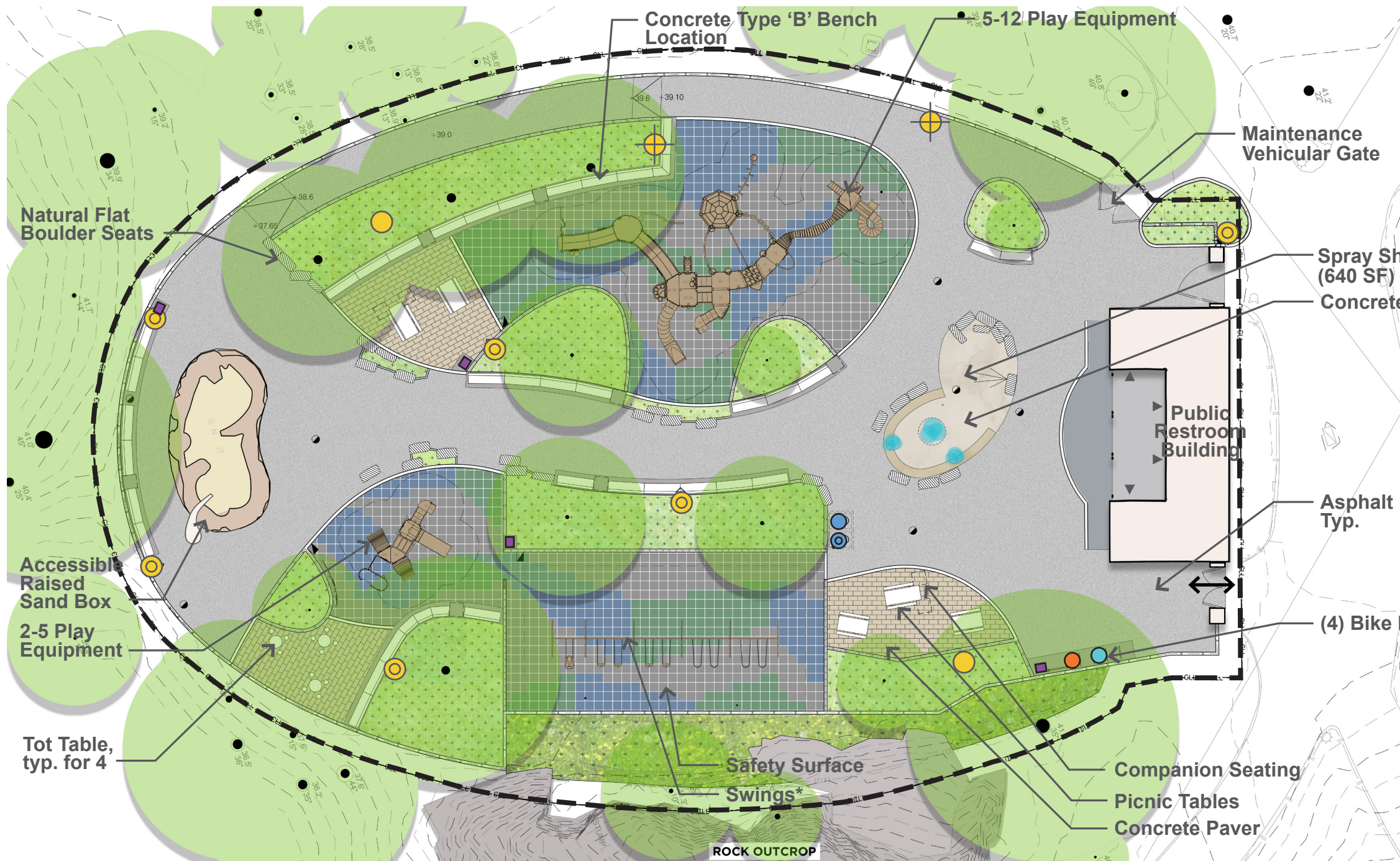


NYC Parks



ABEL BAINNISON BUTZ, LLP





## Legend

Building or Structure

Project Limit

Steel Fence & Gate

Park Entry

\* Swings are 8' Ht. & include:

- 4 strap seats
- 4 full bucket seats
- 1 inclusive seat

**PRB** Public Restroom Building (Not Accessible & Not in Contract)

Hi-Lo Drinking Fountain

Bottle Filler

Trash Bin

Spray Shower Area

Bike Racks

Toddler Scooter Racks

Type B Pole with Riverside Park Luminaire - Exist. to Remain

Type B Pole with Riverside Park Luminaire - Relocated

Type B Pole with Riverside Park Luminaire - New

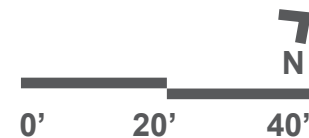


NYC Parks

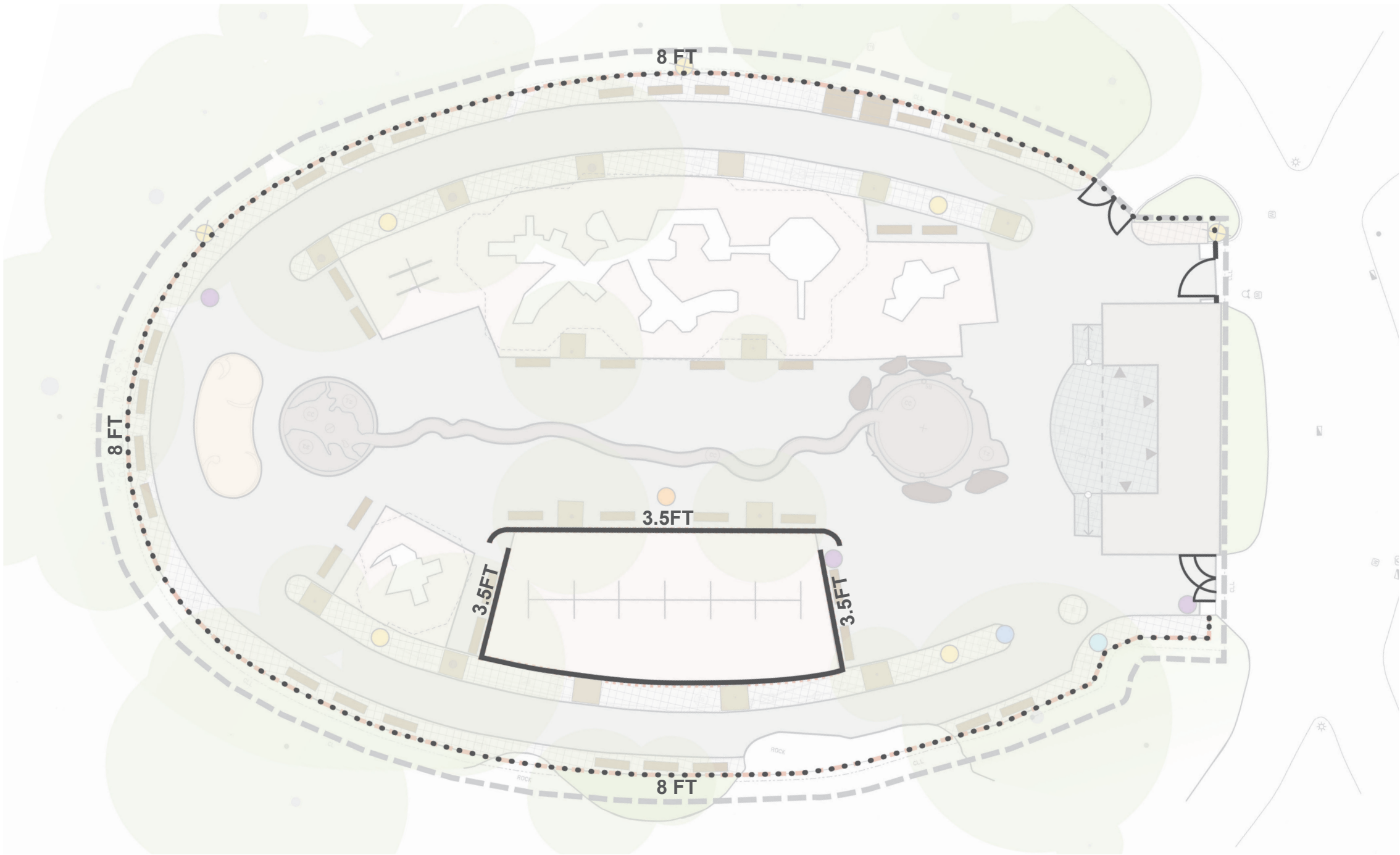


ABEL BAINNSON BUTZ, LLP

## Riverside Park's River Run Playground | Schematic Plan







# Legend



FENCE GATE

EXISTING FENCES (x = HEIGHT)



CLF



STEEL

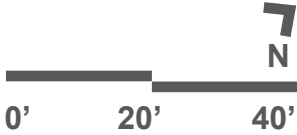


NYC Parks



ABEL BAINNSON BUTZ, LLP

## Riverside Park's River Run Playground | Existing Fence Diagram







# Legend

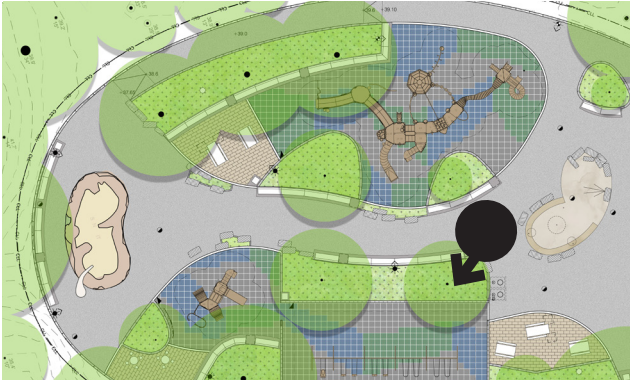
- MD** FENCE GATE
- MODIFY EXISITNG - PAINT
- MD**
- MEDIUM: 4' HT.  
x' STEEL
- LOW: 1' HT.  
x' WICKET STEEL FENCE



## Riverside Park's River Run Playground | Proposed Fence Diagram







Key Plan  
NTS

7  
N



NYC Parks



ABEL BAINSON BUTZ, LLP

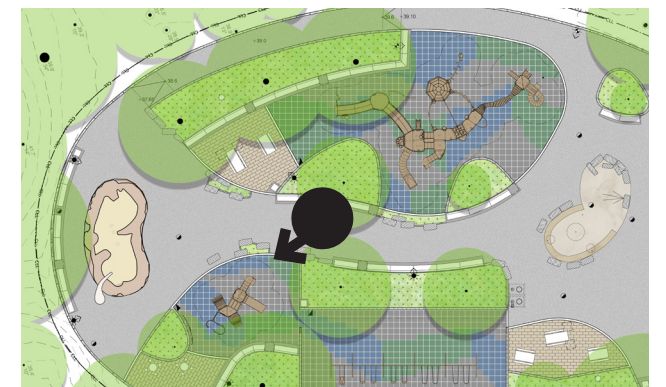
# Riverside Park's River Run Playground | Swing





## Note

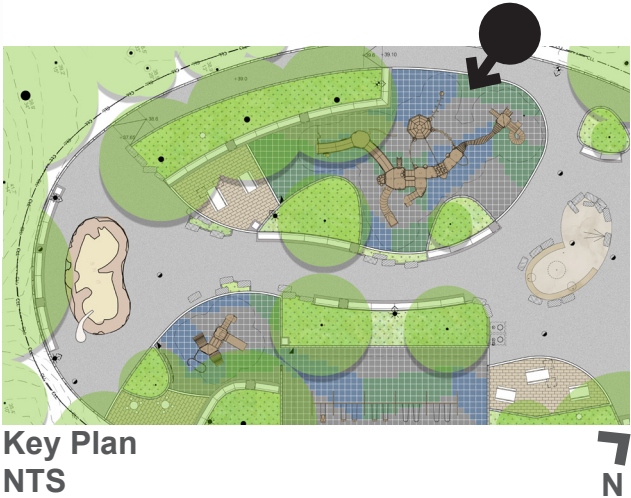
- Total elevated components accessible by transfer - 6 (Required - 3)
- Total accessible ground level components shown - 16 (Required -3)
- Total different types of ground level components - 8 (Required - 8)





**Note**

- Total elevated components accessible by ramp - 12 (Required - 8)
- Total elevated components accessible by transfer - 9 (Required - 8)
- Total accessible ground level components shown - 10 (Required -8)
- Total different types of ground level components - 8 (Required - 8)





Water Cascade on  
Top of Rock

(1) Small Flared Wave Jet  
with Boulder

Drain to Sanitary

Natural Flat Boulder Seats

Concrete Pavement with  
Steel Fabric Reinforcement

Activator Bollard

(1) Mushroom Jet

Splash Zone, typ.

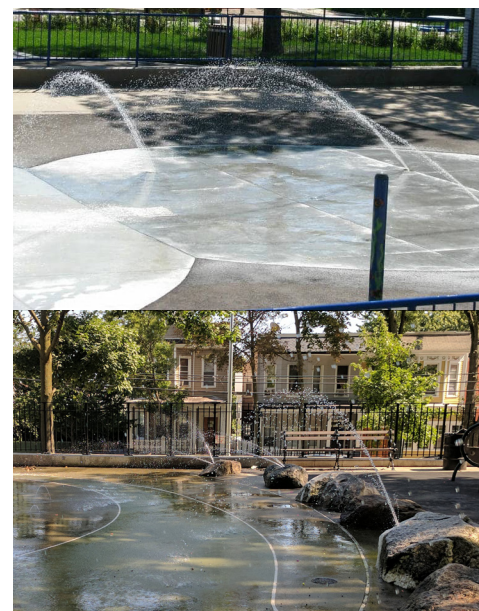
(2) Finesse Jet and Bubbler  
Jet along Water Runnel

Asphalt Pavement

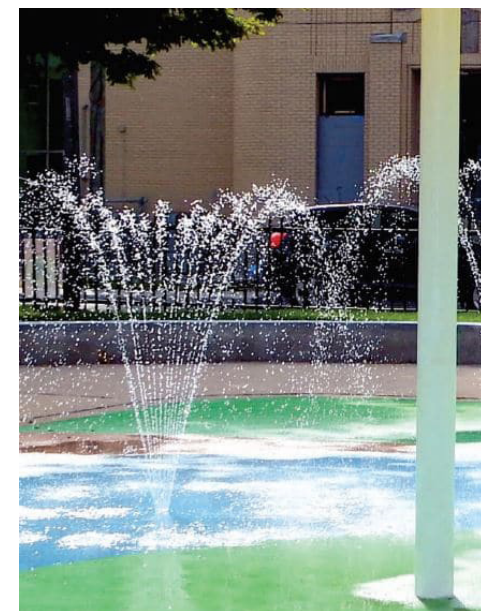
Spray Shower: 640 SF

Spray Shower Enlargement Plan  
NTS

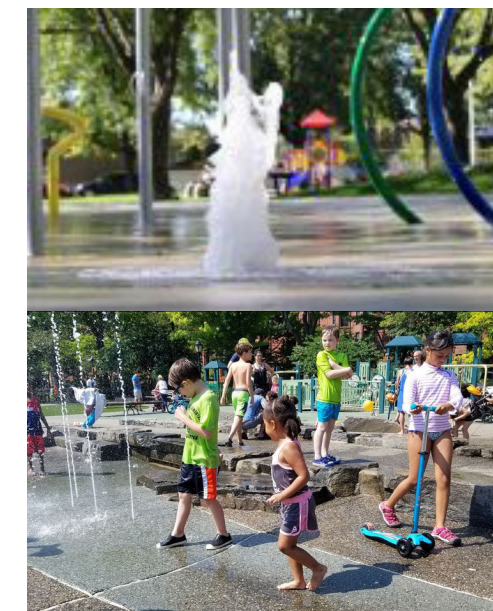
7  
N



Small Flared Wave Jet with  
Boulder



Mushroom Jet



Splash Runnel with Finesse Jet  
and Bubbler Jet



Natural Flat Boulder Seats,  
South Bay Quartzite



Activator Bollard

Iron  
Texture  
49/70785

Powder Coat  
Colors



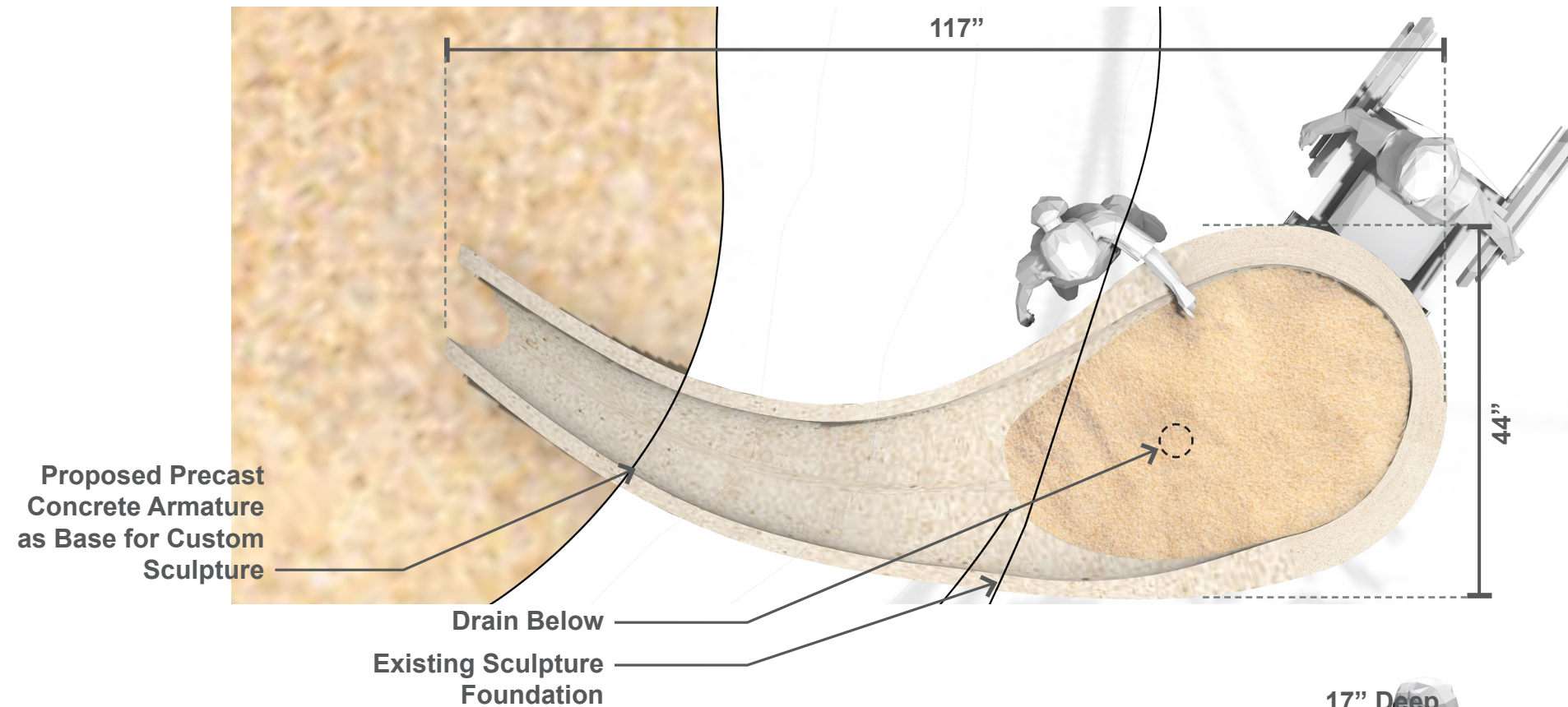
NYC Parks



ABEL BAINSON BUTZ, LLP

Riverside Park's River Run Playground | Spray Shower Materials

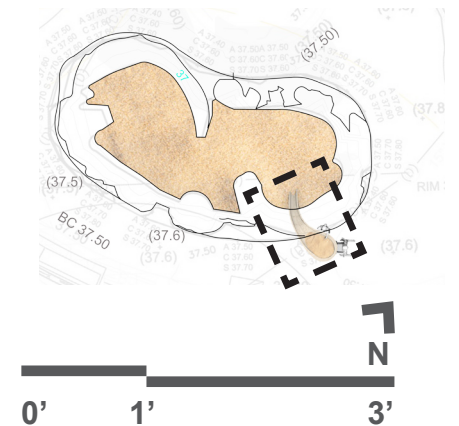
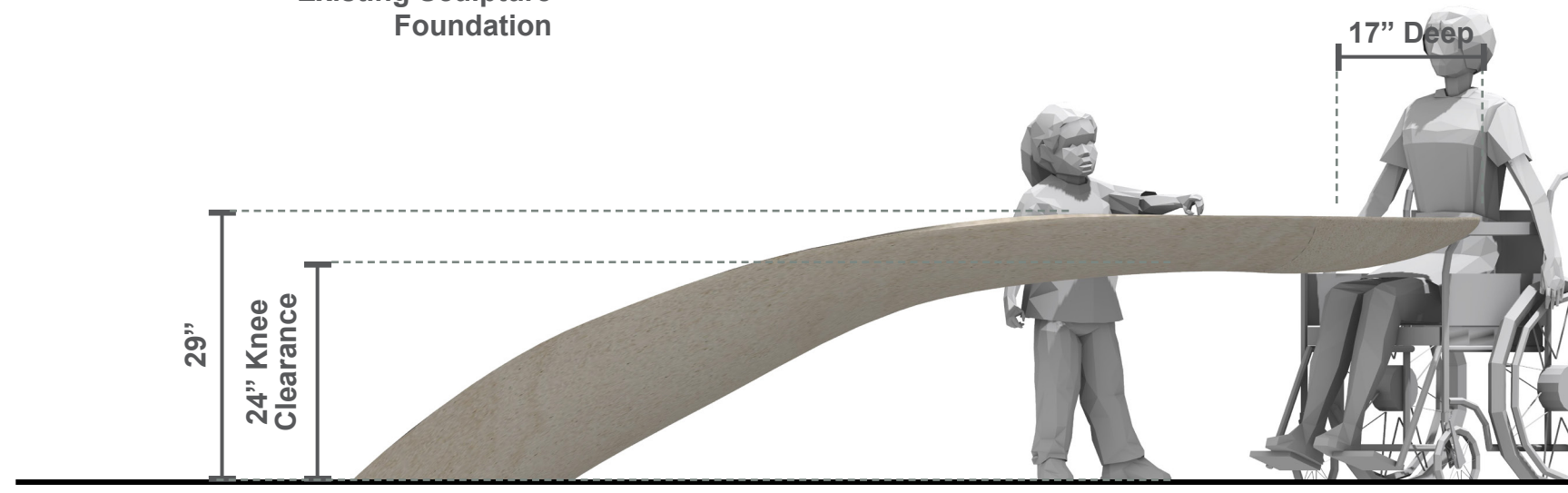




## Note

This image is schematic and represents the cantilever intent and armature as base for custom sculpture. ABB is working with the original sandbox artist to develop a matching aesthetic.

There are many sandboxes in Riverside Park, and there is an in-place maintenance regime to support them.

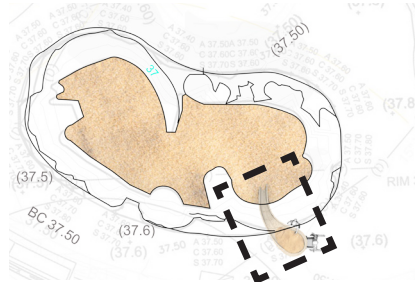
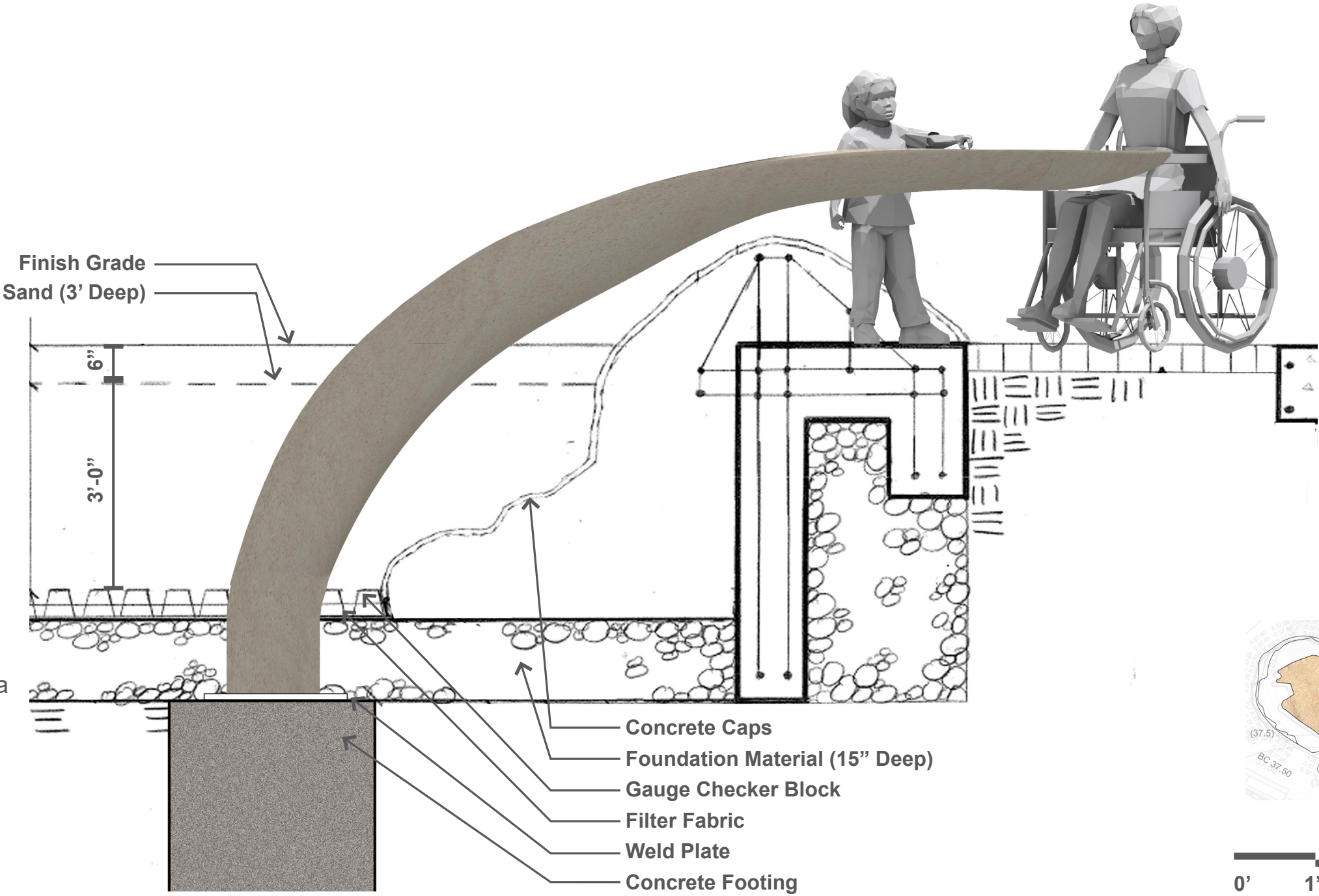




**Note**

This image is schematic and represents the cantilever intent and armature as base for custom sculpture. ABB is working with the original sandbox artist to develop a matching aesthetic.

There are many sandboxes in Riverside Park, and there is an in-place maintenance regime to support them.



**Riverside Park's River Run Playground | Proposed Armature Section**

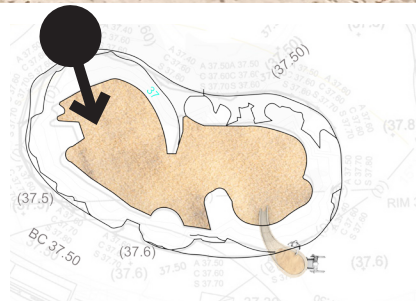




### Note

This image is schematic and represents the cantilever intent and armature as base for custom sculpture. ABB is working with the original sandbox artist to develop a matching aesthetic.

There are many sandboxes in Riverside Park, and there is an in-place maintenance regime to support them.



NYC Parks



ABEL BAINNSON BUTZ, LLP

## Riverside Park's River Run Playground | View





Concrete Pavement



Asphalt Pavement



Steel Decks



Cable



Slides  
Stainless Steel



Roof  
Recycled Plastic Lumber

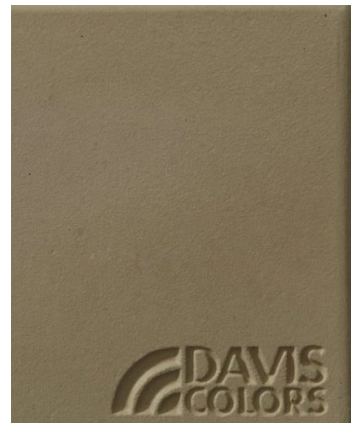


Stone on Concrete  
Base - Bluestone

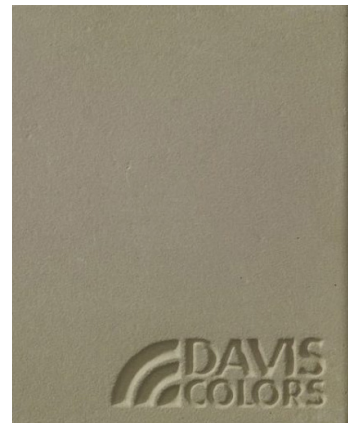


Hanover Concrete  
Paver, Size: 12"x12",  
Color: Beige

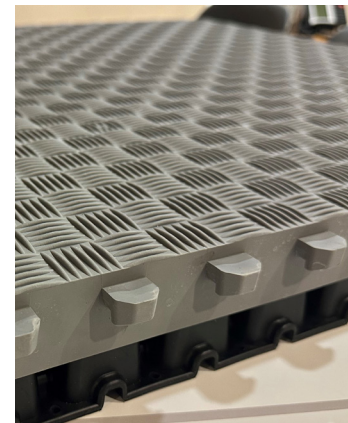
Play Equipment Colors & Materials (2-5 & 5-12)



Colored Concrete  
Pavement, Sand Diego  
Buff 5237 by Davis  
Colors or Equal



Colored Concrete  
Pavement, Sandstone  
5237 by Davis Colors  
or Equal



Safety Surface: GreenScape Sustainable Surface  
or Eq. Selection from NYC Parks Standard  
Colors







**Concrete Type 'B' Bench with Armrests**



**Wooden Picnic Tables, Accessible and Regular**



**Finish of Picnic Tables and Benches, Typ.  
Wood Slats:  
Kebonized Radiata Pine**



**Bigbelly Trash Cans**



**Precast Concrete Tot Tables and Seats**

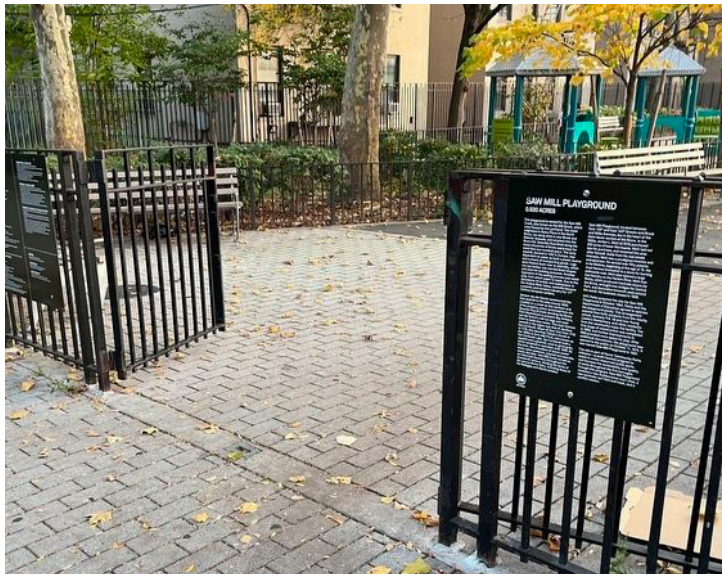


**ADA Accessible Hi-Lo  
Drinking Fountain  
Color: Black**



**Bottle Filler  
Color: Black**





Double Gate for Steel Fence Vehicular Access, 4ft high



4ft High Steel Picket Fence at Perimeter, 3ft Steel Picket Fence at Swings



Wicket Steel Fence



Standard NYC DOT 'City Rack'



Toddler Scooter Racks, Color: Black



Type B-9 Pole with Riverside Luminaire





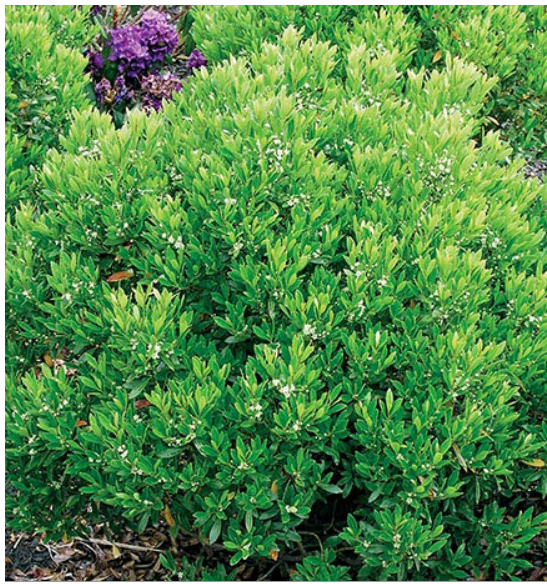
**Christmas fern \***  
*Polystichum acrostichoides*



**Black Chokeberry \***  
*Aronia Melanocarpa*



**White Wood Aster**  
*Eurybia Divaricata*



**Inkberry \***  
*Ilex glabra 'Shamrock'*



**False Spirea**  
*Astilbe Bridal Veil*



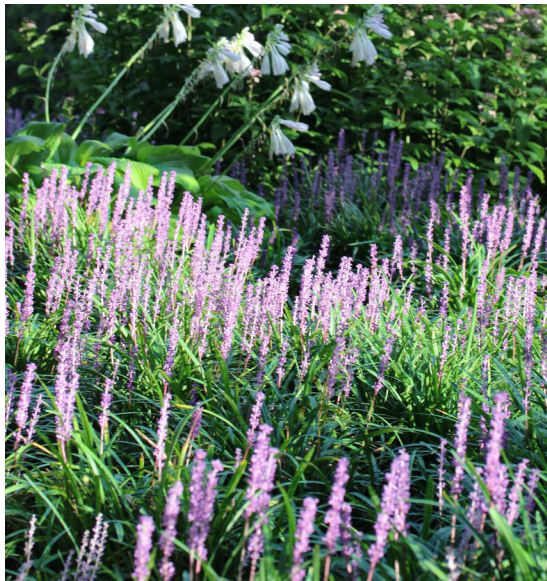
**Fragrant Sumac**  
*Rhus aromatica 'gro low'*



**Pennsylvania Sedge \***  
*Carex pensylvanica*



**Blazing Star**  
*Liatris Spicata Kobold*



**Creeping Lily Turf \***  
*Liriope Spicata*



**Allegheny Spurge \***  
*Pachysandra procumbens*

**Evergreen \***



NYC Parks

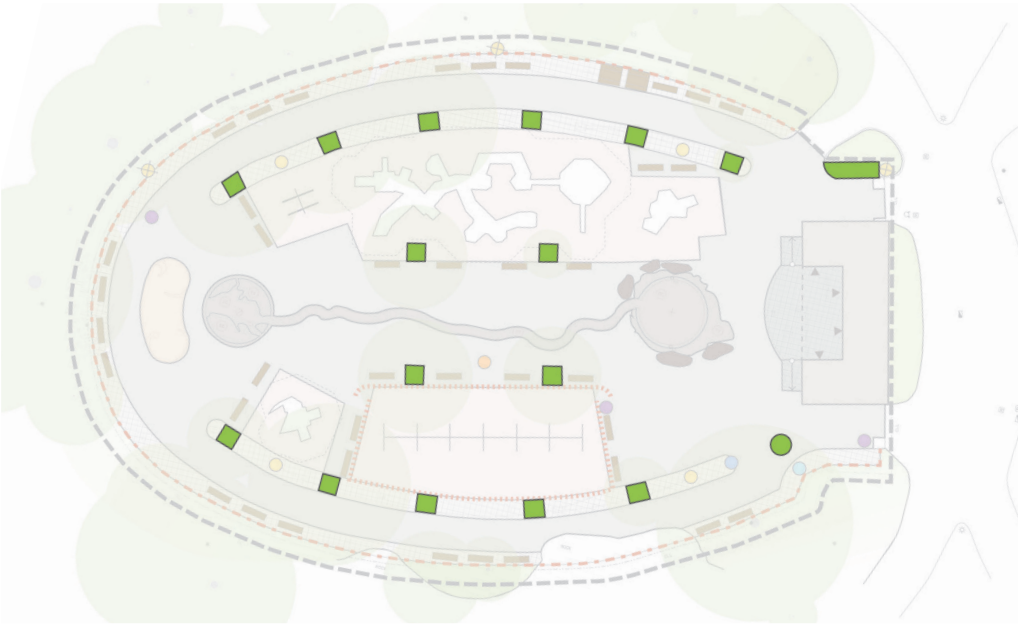


ABEL BAINSON BUTZ, LLP

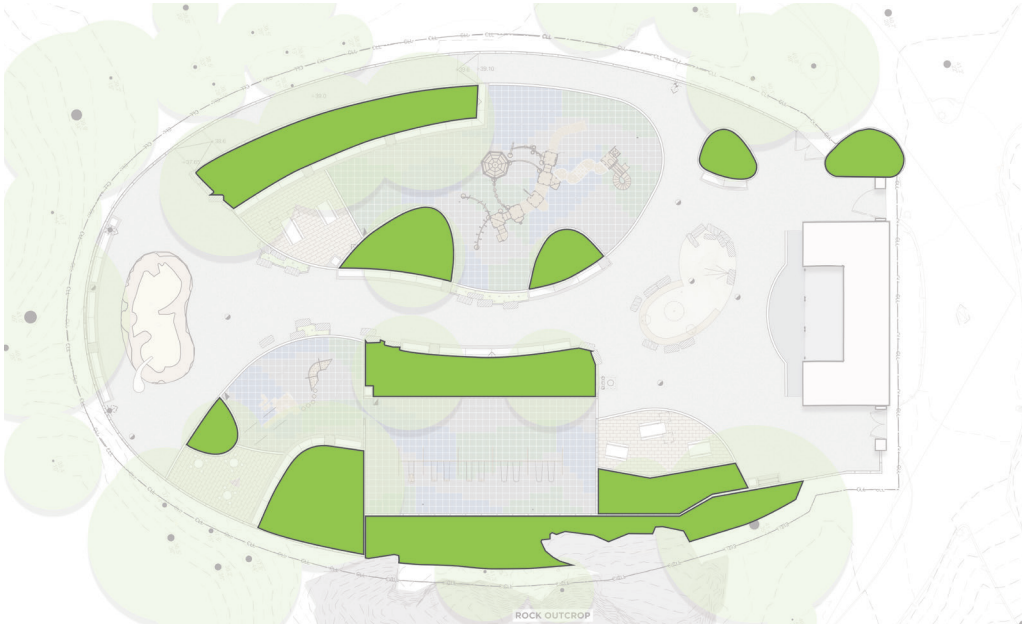
# Riverside Park's River Run Playground | Planting Palette



Total Project Area: 30,140 SF



Existing Permeability: 2.5% (748 SF)



Proposed Permeability: 20.0% (6,020 SF)

Legend

 PLANTED AREA (6,020 SF)

SF of areas noted above are for proposed conditions.

Sustainable Practices

- Reduce storm water runoff
- Improve tree health and growing conditions
- Use site appropriate resilient plant material

DEP Unified Stormwater Rule (USWR) Requirement

USWR stormwater management and permitting is required for this project. USWR is required because more than 20,000 SF is being disturbed.

















**Public Restroom Building  
(Not Accessible, NIC)**

**Spray Shower**

**Picnic Area,  
Beyond**

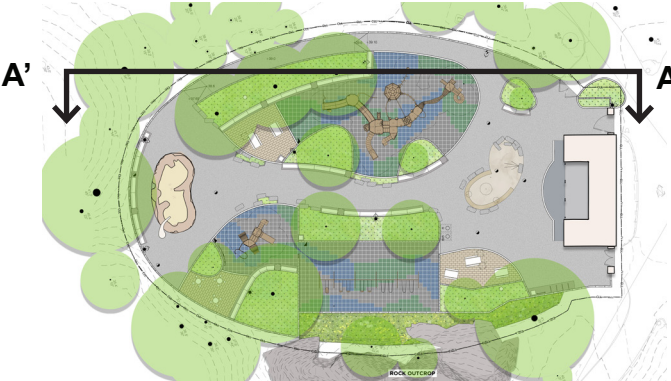
**Play Equipment  
Ages 5-12**

**8' Height Swings,  
Beyond**

**Play Equipment  
Ages 2-5, Beyond**

**Sand Box with  
Accessible Sand Table**

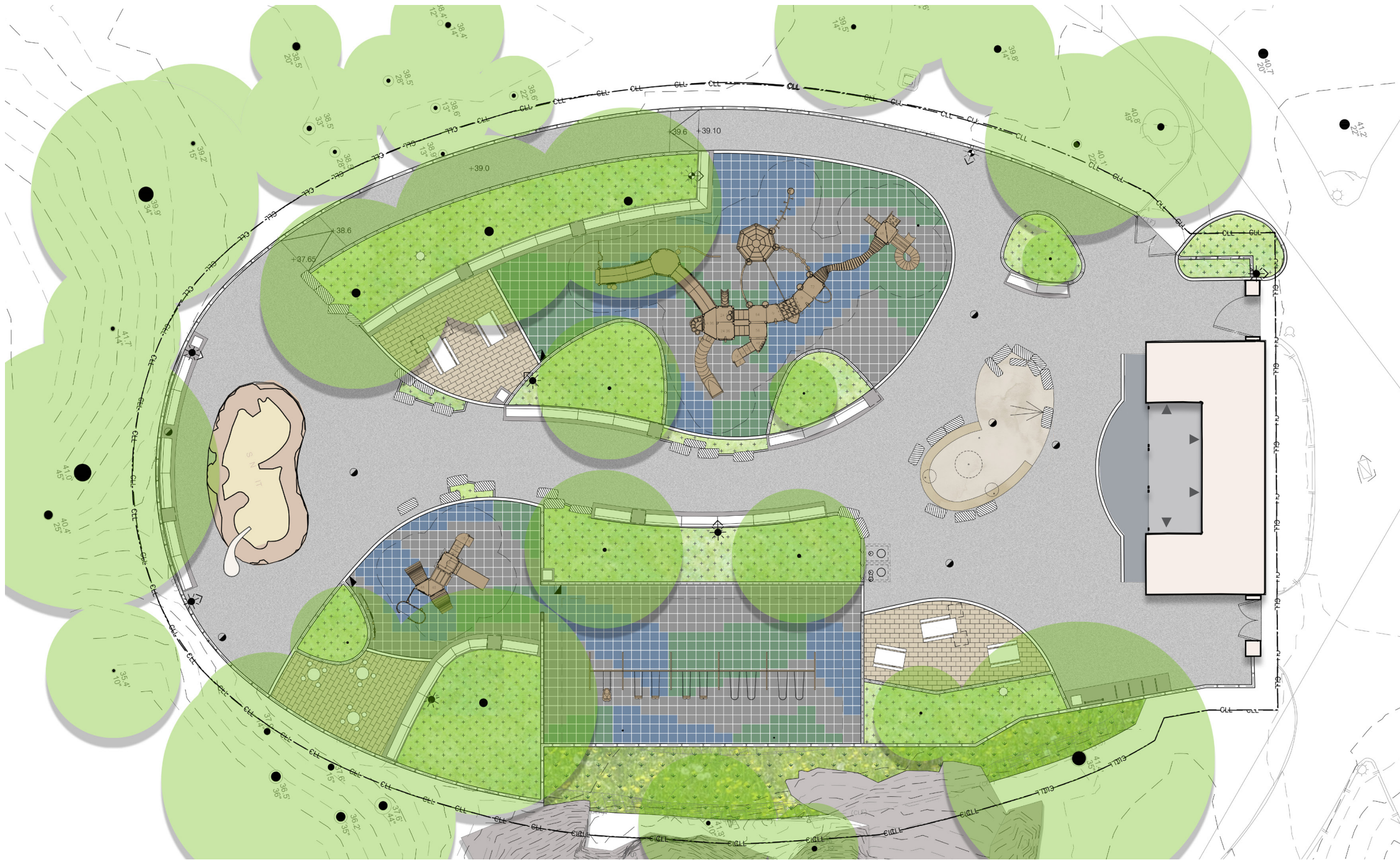
0' 10' 20'



**Key Plan  
NTS**

**7  
N**





NYC Parks



ABEL BAINSON BUTZ, LLP

## Riverside Park's River Run Playground | Schematic Plan

